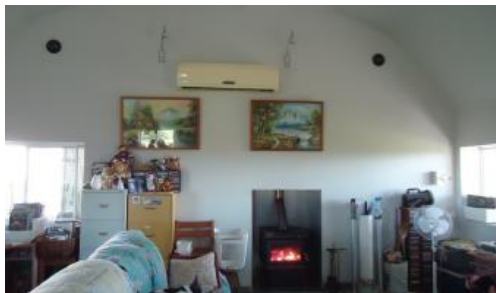


Sold



Lot 145 Up River Road, Proserpine



A RURAL LIFESTYLE BLOCK. WITH CROPPING OR LIVE STOCK OPPORTUNITIES.

13.37 Hectares (33 Acres) of prime land, fenced. Liveable shed with stand alone solar power, gas hot water and stove. Property has aprox 90,000 litres of water storage in tanks. Dam with aprox 1 meg of storage. Large 25m x 6m shed which

stores the John Deere 2140 tractor with 6 foot howard slasher and other implements including 2 ride on mowers. The property has established fruit trees

and offers the chance to grow small crops or run a few cattle. The residence has been fully insulated roof and walls. Dont miss this chance to get out of town and be self sufficient.

The above information provided has been furnished to us by the vendor/s. We have not verified whether or not that information is accurate and do not have any belief in one way or the other in its accuracy. We do not accept any responsibility to any person for its accuracy and do no more than pass it on. All interested parties should make and rely upon their own inquiries in order to determine whether or not this information is in fact accurate.

🛏 1 📶 1 🚗 2

Price SOLD for \$265,000
Property Type residential
Property ID 829
Land Area 133,700 m2

AGENT DETAILS

Shane Spann - Shane 0418180645

OFFICE DETAILS

Spannys Whitsundays Real Estate
56 Main St Proserpine QLD 4800
Australia
07 4945 5770

